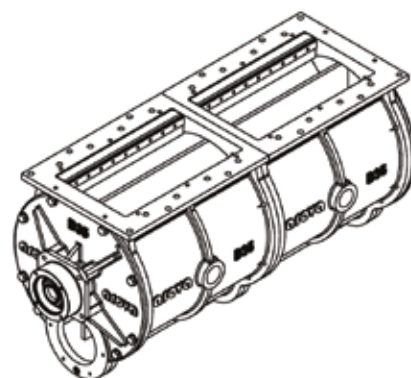
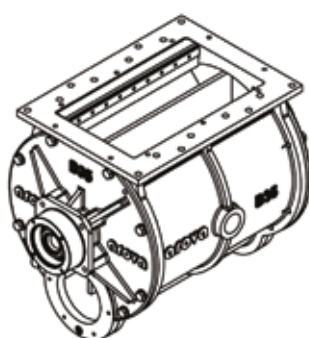
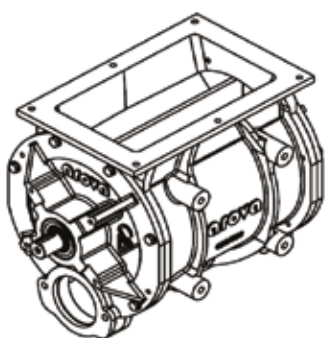




ALL ROTARY VALVES

# ROTARY FEEDERS FOR THE ANIMAL FEED INDUSTRY



# WELCOME

at AROVA valves.

AROVA is a story that grew alongside myself. Three generations of knowhow, technical experience and wisdom, given from father to son. AROVA has been designing and manufacturing rotary valves for more than 40 years! And we are still happy to do so! Quality and sustainability are paramount when developing new AROVA valves. The AROVA range combines standard installation dimensions, unique geometry and the best techniques with regard to each system.

"For over 40 years we are developing rotary valves with a better return, better sustainability and above all, our AROVA valves are easy to use."

The product range of blow-through valves has been manufactured by AROVA for pneumatic transport of granular products. We have an own production line, that we designed specifically for the agriculture sector.

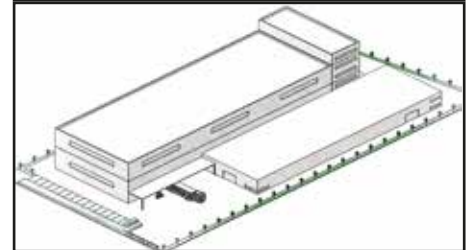
The AROVA valves are available in 3 different types, with capacity varying from 20.5 to 70 liter per rotation. We are happy to be able to announce that our product range is standard foreseen to blow every type of granular product. The AROVA models are suitable for products up to a temperature of 60 degrees and a pressure up to 5 bar. Because we are very committed to corporate social responsibility, AROVA valves are durable and can be revised several times.

DISCOVER AND SEE FOR YOURSELF - Pieter Vandersteene (CEO)

## FAMILY VANDERSTEENE



## HQ IZEGEM, BELGIUM



## 20 HAPPY EMPLOYEES



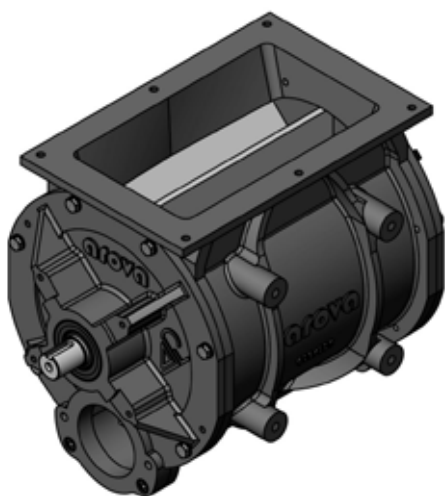
## OWN PRODUCTION



# PRODUCT RANGE

---

AROVA valves are used for conveying and dosing several products in demanding applications. The valves are suitable for handling powdered and granulated materials in pneumatic transport. **All valves are designed with a cast iron stator, cast iron flanges and a welded steel rotor.**



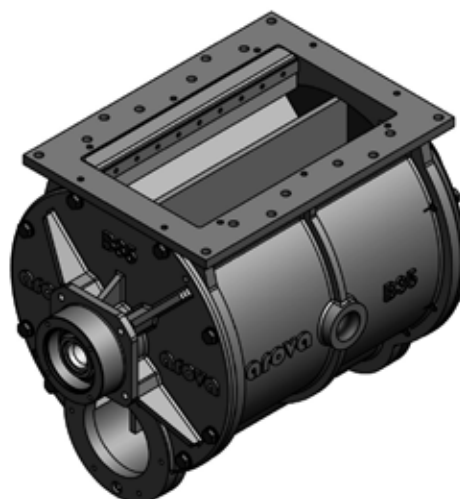
## TYPE 30/36

- 22 tons per hour at 30 rpm (capacity compound feed)
- Rotor volume: 20.5 dm<sup>3</sup> per rotation
- 5 bar: maximum work pressure
- Inside bearings
- External axis
- Blow-through diameter of Ø 98 mm (4 inch)

---

## TYPE B35

- 38 tons per hour at 30 rpm (capacity compound feed)
- Rotor volume: 35 dm<sup>3</sup> per rotation
- 3.8 bar: maximum work pressure
- Outside bearings
- Internal axis
- Blow-through diameter of Ø 125 mm (5 inch)



---

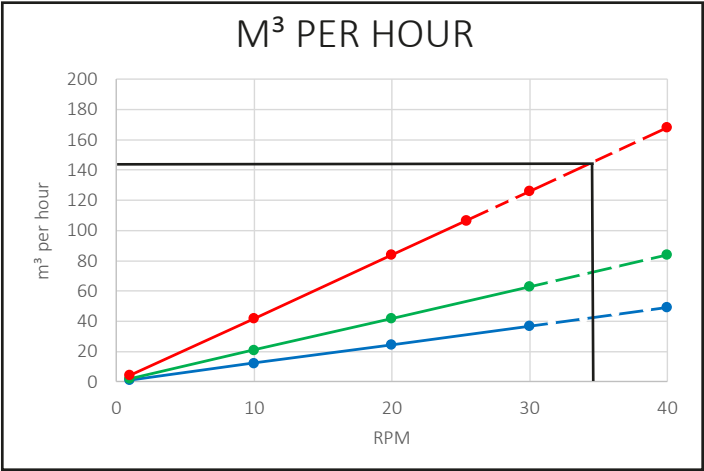
## TYPE B70

- 76 tons per hour at 30 rpm (capacity compound feed)
- Rotor volume: 70 dm<sup>3</sup> per rotation
- 1.9 bar: maximum work pressure
- Outside bearings
- Internal axis
- Blow-through diameter of Ø 125 mm (5 inch)



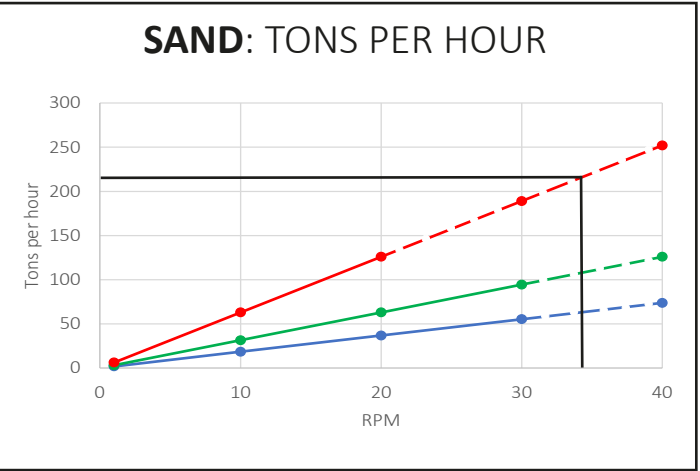
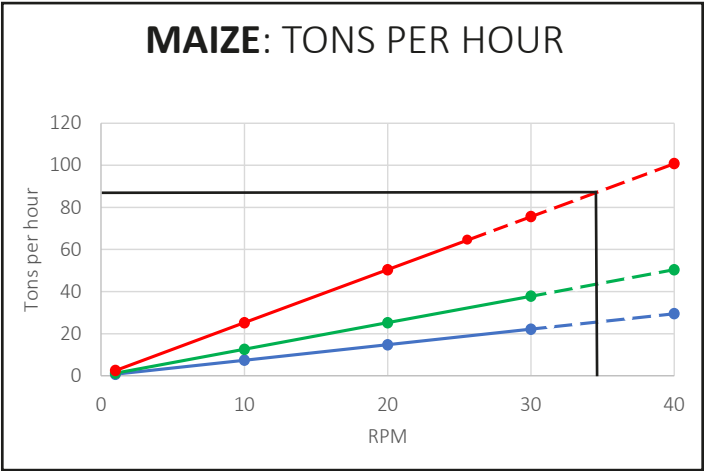
# CAPACITY CHART

Filling efficiency 100%.



● 30/36    ● B35    ● B70

TYPE	RPM	TONS PER HOUR 100% FILLING	TONS PER HOUR 80% FILLING
30/36	34	41.83	33.456
B35	34	71.4	57.12
B70	34	142.8	114.24



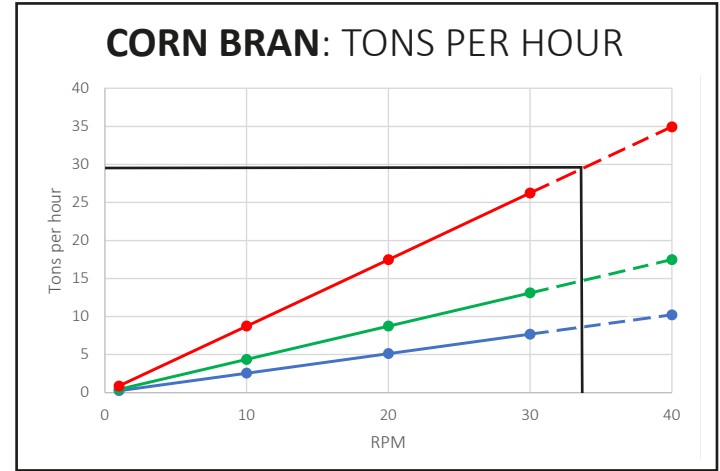
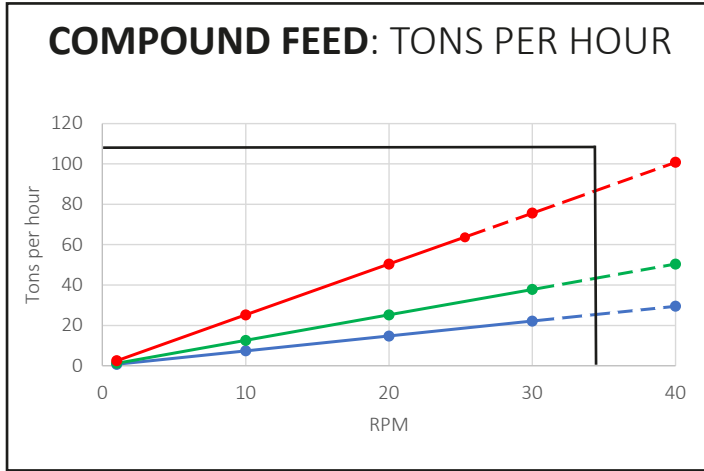
**MAIZE**

Bulk density: 600 kg/m<sup>3</sup>



**SAND**

Bulk density: 1.500 kg/m<sup>3</sup>



**COMPOUND FEED**

Bulk density: 600 kg/m<sup>3</sup>



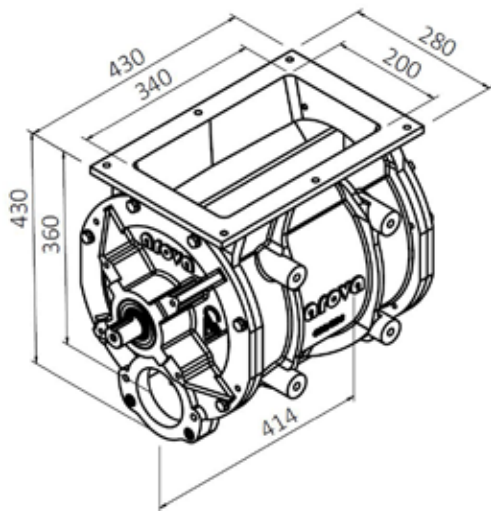
**CORN BRAN**

Bulk density: 208 kg/m<sup>3</sup>



# TECHNICAL SHEET

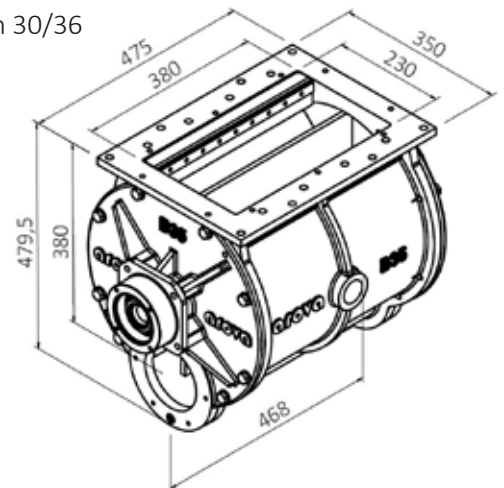
## TYPE 30/36



- **Compact build-in dimensions**
- **Water- and winterproof**
  - Protection against high pressure cleaning
  - Usable from -15°C to +60°C
- **Robust**
  - High quality cast iron GG25
  - Solid wall thickness
  - Inside bearings
- **Sustainable**
  - Revisable
  - Complete AROVA seal package, specially designed for a longer durability of the valve
- **Smooth flow by intelligent geometry**
  - Half-underlying blow gutter. The gutter is slightly lower placed, providing a constant, uninterrupted airflow
  - V-shaped entry opening. The sloping cutting edge makes the product smoothly drag off

## TYPE B35

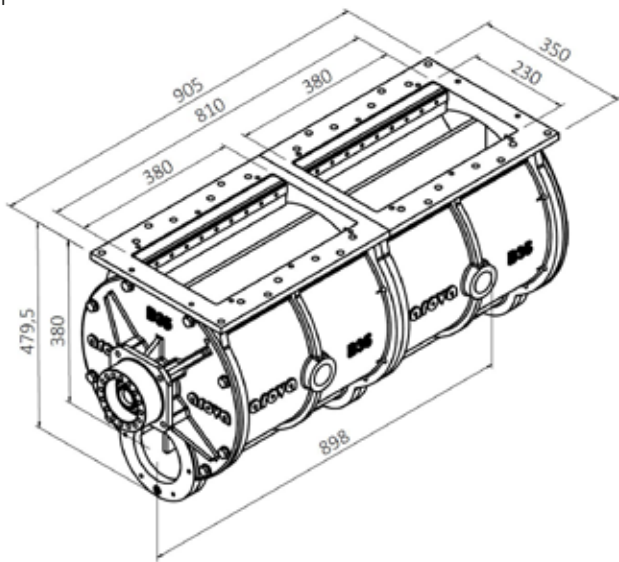
Optimization on 30/36



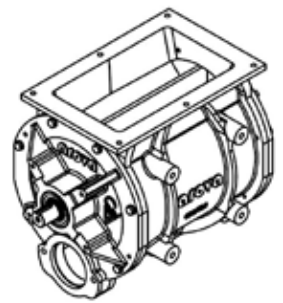
- **Compact drive solution by slide-in electric engine**
- **Durability**
  - Chemical treatment on all cast iron part
    - Anti-rust inside and outside
    - Anti-wear for a double lifecycle
  - Outside bearing for a longer lifecycle
- **All-round solution**
  - Stripper prevents breaking the granular product
  - Scraper blade prevents the build-up of the product by its sharp edges

## TYPE B70

Optimization on B35



- Double volume by assembling 2 times B35 side to side
- Quick release of light products with a larger volume and a low bulk density



### BUILT TO LAST

#### Bearing

- Maintenance-free with a service life of 12 years (0.5 bar, 40 degrees, 30 RPM)
- Working temperature from -15°C to +60°C
- Inner bearings: deflection of the rotor is prevented by placing the bearings as close to the center as possible

#### Seals

- X-ring: made for high pressure
- Oil seal: made to hold up the grease
- Grease: made to build up a natural barrier
- Hardened ring: made to protect the axle X-ring

#### Geometry

- The shape of every part is experience-based, rebuilding rotary valves gives a constant knowledge input
- Thickness is variable according to wearable zones and maximum rebuild possibilities

#### Big central axle in high quality steel

- Minimum deflection by high upper loading
- Minimum deflection by high pressure blowing
- Solid base for welded rotor blades
- Maximum natural pressure sealing between chambers

### BUILT TO PERFORM

#### V-shaped entry opening

- Large fall-through opening in the middle
- Maximum strength in the corners
- Cutting effect for semi-hard products
- Product smoothly drags off

#### Half-underlying blow gutter

- Ensures constant carrying air
- Less chance of clogging in the event of overloading
- Preventing gag transport
- Smooth operation

#### Big central axle for maximum natural pressure sealing between chambers

### MADE TO BUILD IN

#### Upper flange with dual function

- Entry hole
- Mounting on the ground with footrests

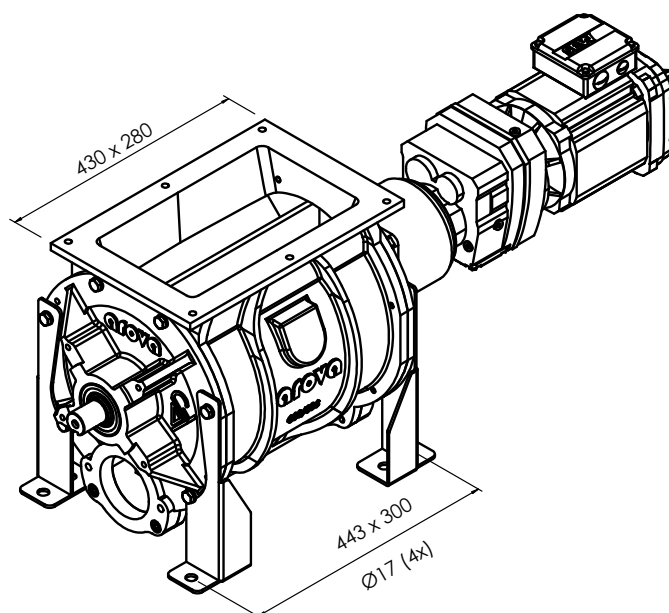
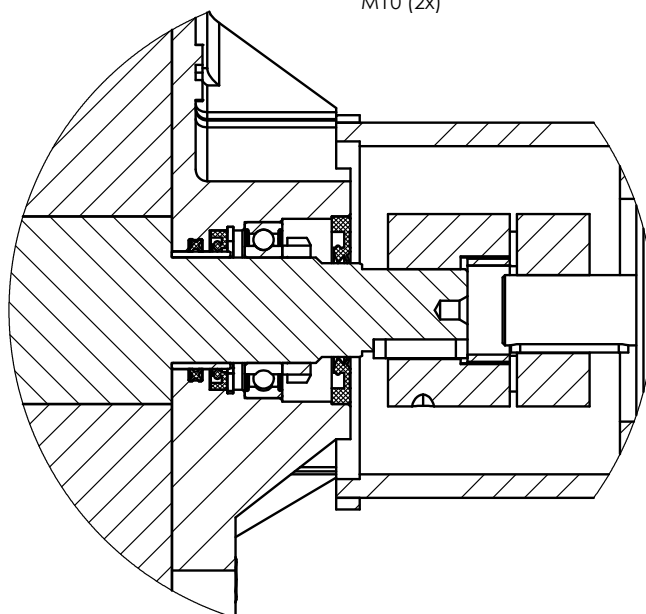
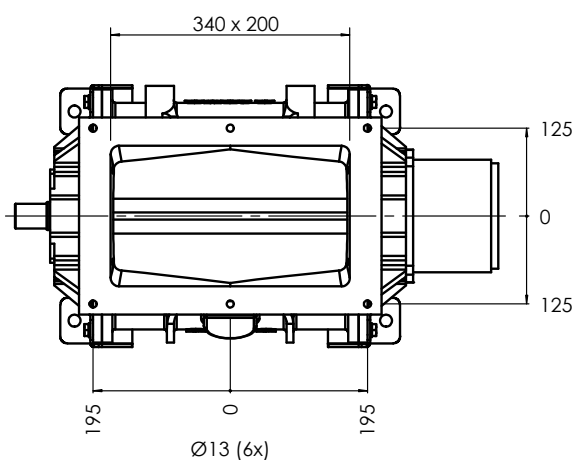
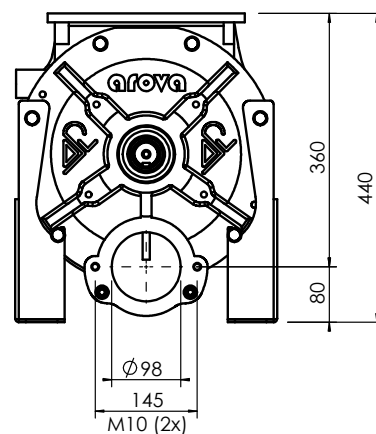
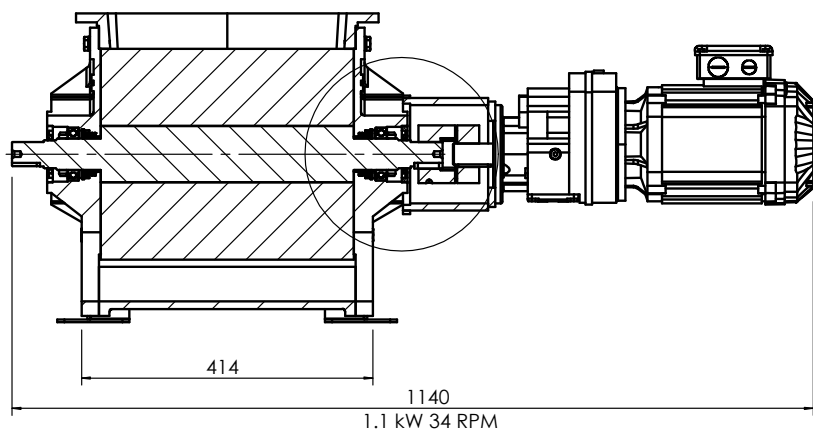
#### Compact electric drive

- Motor in line with coupling
- Custom mounting pot. Safe, no additional shielding required

#### Compact with large volume

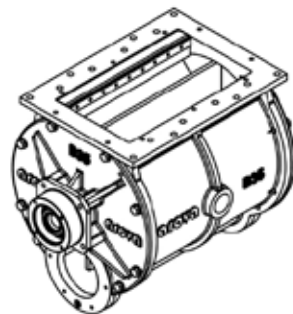
- Low installation dimensions due to a short drop-in hole
  - Axis line has a high position relative to the upper flange
  - Total installation height is low in relation to the rotor volume
- Narrow installation size
  - The compact arrangement of bearings and seals ensures a minimum installation length in relation to the rotor volume
  - Limited width of the rotary valve ensures a minimum installation width relative to the rotor volume

# 30/36



# PRODUCT SHEET

## B35 SPECIFICATIONS 30/36 + EXTRAS



### BUILT TO LAST

#### Outside bearings

- A gap in free environment provides extra protection
- Two extra seals go one step further in the protection of the bearings

#### Surface treatment Niblox on cast iron

- Longer service life. The AROVA lab tests show a doubled life cycle with abrasive products
- Anti-rust outside and especially inside. Certainty of no internal rust on cast iron

### BUILT TO PERFORM

#### Scraper blade on rotor

- Hygroscopic products cannot build up on the wall
- Every turn, sharp teeth ensure a constant breaking action
- No possibility of jamming the rotor

#### Stripper on stator

- Prevents 100% filling of the rotor chamber
- Hard materials (such as pellets) cannot clamp between the rotor and the stator
- The obstruction of the rotor is prevented

#### Vent hole

- Decompression of the rising pressure in the chamber of the rotor
- Maximum filling capacity of light products

#### Softer effect due to large outlet opening Ø 125 mm

- Pressure drop due to a transition in the pipe from 100 mm to 125 mm
- Pressure drop due to a larger rotor chamber
- Air/product volume ratio is kept under control by locally increasing the volume of the air chamber

### MADE TO BUILD IN

#### Retract electric engine

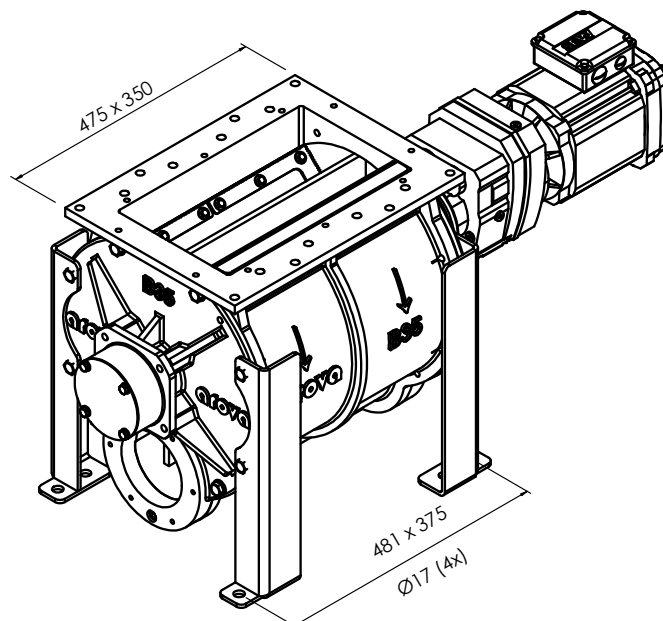
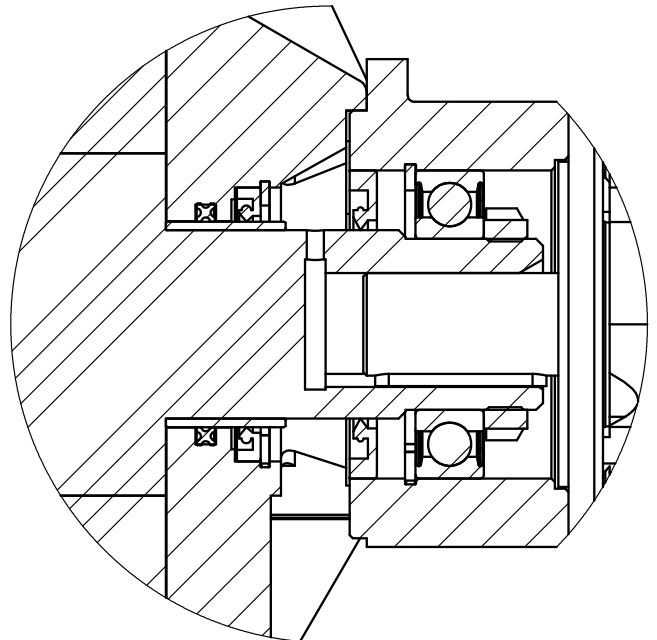
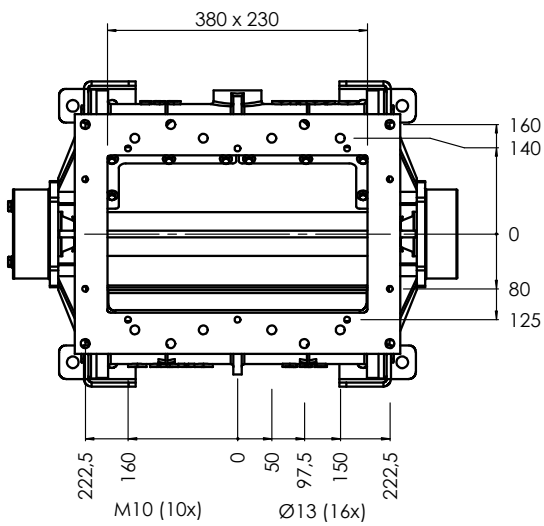
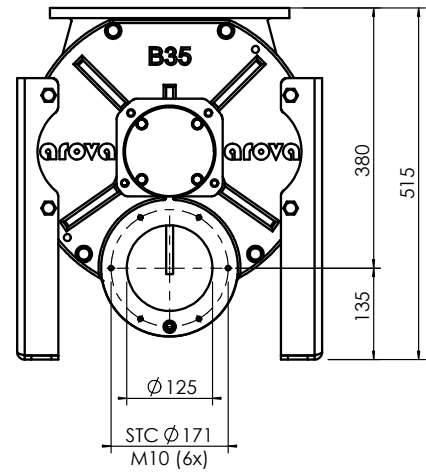
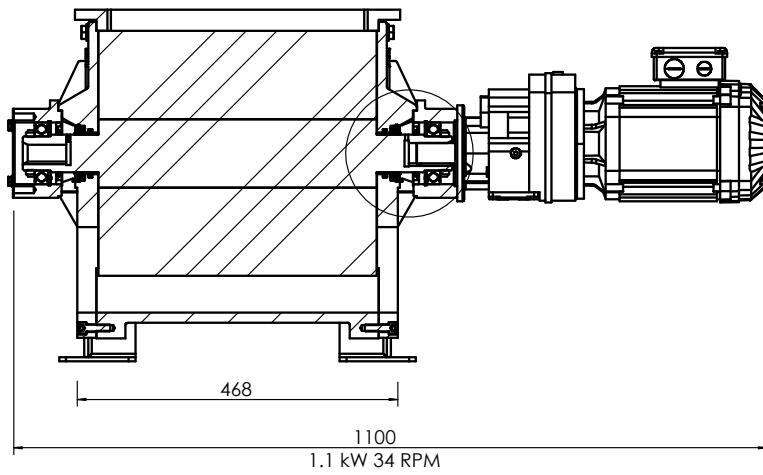
- Extremely compact assembly
- Safe, no additional shielding required
- Fewer parts

#### Compact geometry

- Due to refined engineering, the ratio between installation dimensions and rotor volume is even tighter than with model 30/36
- Extremely short due to assembly of the drive
- Assembly surfaces and ribs are narrower and stronger



# B35

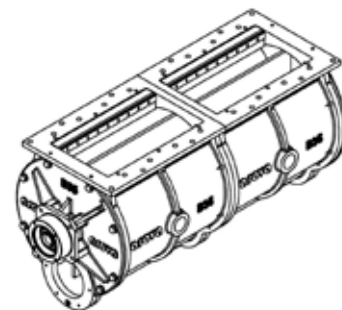


# PRODUCT SHEET

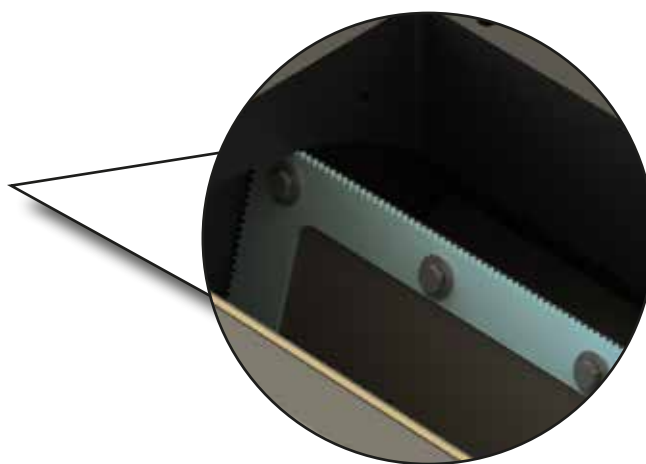
## B70 SPECIFICATIONS B35 + EXTRAS

- = Two times B35 mounted together
- = Two times maximum advantages

- Two vent holes
- Double product volume with identical blowing connection
- Wide access hole, larger part of the trailer is covered
- Compact with two electric engines in line

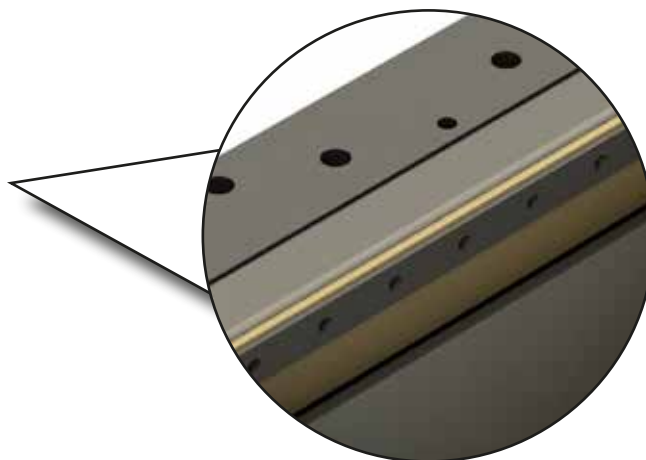
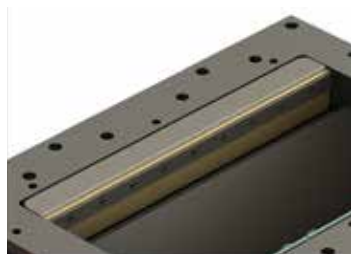


## FEATURES B35 AND B70



### Scraper blade

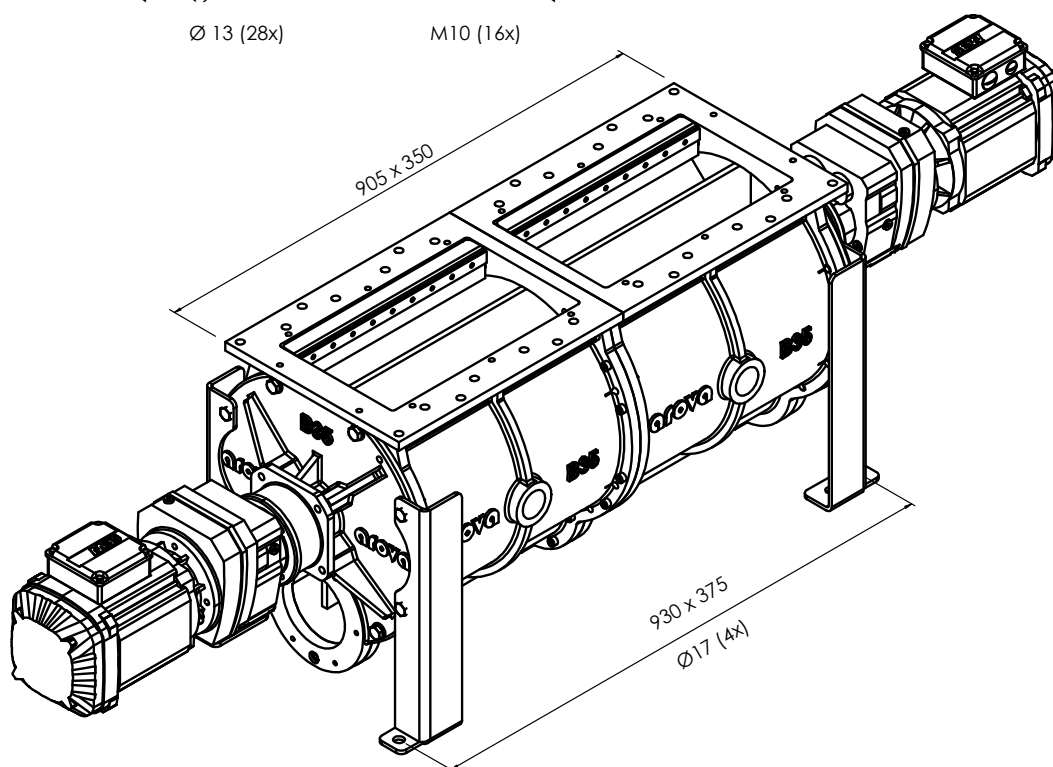
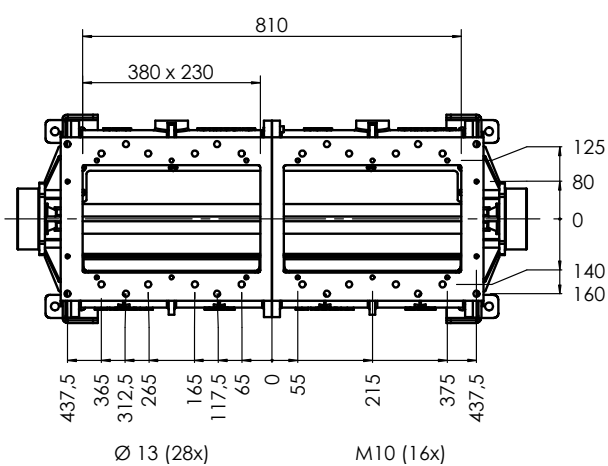
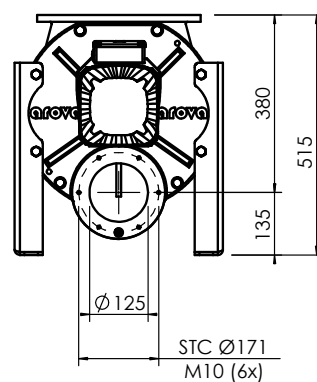
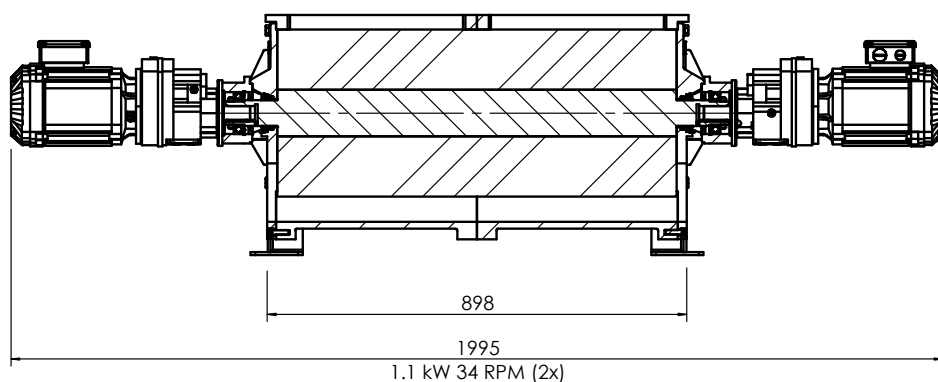
- Installed on rotor blade
- Hygroscopic products cannot build up on the wall
- At each turn of the rotor, the sharp teeth of the scraper ensure a constant breaking action
- No possibility of jamming the rotor



### Stripper

- Installed on the stator
- Prevents 100% filling of the rotor chamber
- Hard materials (such as pellets) cannot clamp between the rotor and the stator
- The obstruction of the rotor is prevented

# B70





Prins Albertlaan 65  
8870 Izegem - BELGIË  
T +32 51 31 93 94  
[info@arova.be](mailto:info@arova.be)  
[www.arova-sluizen.be](http://www.arova-sluizen.be)

05/2020